

Stanilite PREMIUM

PRODUCT RANGE

Weatherforce™ Vandal Resistant



- Vandal Resistant IP65 Construction
- Cold Cathode, 10W, 18W & 36W Lamp Options
- Standard or Computer Monitored Options
- Hi Temperature NiCad Batteries

The Weatherforce Vandal Resistant Series of Exits and Emergency Battens have been designed to combine the best features required for AS/NZS 2293 Evacuation Lighting suitable for a wide range of Commercial and Industrial applications.

Weatherforce Exits are available with 10W or Stanilite Cold Cathode "6-year" lamps. The Cold Cathode lamped version not only provides a new level of reliability but market leading power consumption (6.6 Watts) up to 300% better than comparable IP65 Exits.

Fittings are available in either Standard (non-monitored) or Nexus (computer monitored) versions. All fittings use High quality GRP (WP type) or Aluminium Diecast (WPD & VP types) bases and have tough polycarbonate diffusers held in place with Stainless steel cap screws. Surface mount electronics as well as 105 deg C rated electronic components give market leading service life and reliability.

Ordering Information & Photometrics

Part Number	Description		Class
WPDBHC104MPR	Weatherforce Cold Cathode	C0	D16
WPDBHCNXS104MPR	Vandal Resistant IP65, 6 year Lamp	C90	C10
WPDBH110MPR	Weatherforce 10W	C0	D16
WPDBHNXS110MPR	Vandal Resistant IP65	C90	C12.5
WPBH118MPR	Weatherforce 18W	C0	D25
WPBHNXS118MPR	Vandal Resistant IP65	C90	C20
VP118M	Premium 1 x 18W Maintained	C0	D32
VPNXS118M	IP65 batten	C90	C20
VP218M	Premium 2 x 18W Maintained	C0	Under
VPNXS218M	IP65 batten	C90	Test
		C180	
VP136M	Premium 1 x 36W Maintained	C0	D63
VPNXS136M	IP65 batten	C90	C50
VP236M	Premium 2 x 36W Maintained	C0	D50
VPNXS236M	IP65 batten	C90	C40
		C180	D16

Notes: The code NXS in any part number denotes Nexus Emergency Monitoring is provided. WPDBH fittings are available in either -PR (prismatic) diffuser or -OP (opal for EXIT use with 31-WP* labels) diffuser options. WPDBH Photometrics apply only to -PR option. Lamps are NOT included in 18 & 36-Watt fittings.

Due to ongoing product development, specification changes may result

Luminaire Spacings

Classification	Mounting Height in Metres							
	2.1	2.4	2.7	3	3.6	4	5	6
C12.5	7.8	8.2	8.6	8.9	9.5	9.8	10.2	10.3
C20	8.9	9.4	9.9	10.3	11.1	11.5	12.3	12.8
C40	10.6	11.3	12	12.6	13.6	14.3	15.6	16.6
C50	11.3	12	12.7	13.4	14.5	15.2	16.7	17.9
D10	10.2	10.6	10.9	11.1	11.4	11.5	11.6	11.2
D12.5	11.1	11.5	11.8	12.1	12.5	12.7	13	12.8
D16	12.1	12.6	13.0	13.3	13.9	14.1	14.6	14.6
D25	14.2	14.7	15.3	15.7	16.5	16.9	17.7	18.1
D32	15.4	16.1	16.7	17.2	18	18.5	19.5	20.2
D50	18	18.7	19.4	20.1	21.2	21.8	23.2	24.2
D63	19.4	20.3	21.2	21.8	23	23.7	25.2	26.4



In a single lamp emergency luminaire the spacings in the C0 plane are proportional to Fig One. In a Twin lamp emergency luminaire one tube is maintained in Emergency Mode. As a result the second "mains only" tube interferes with the light distribution in several planes. As a result, all twin lamp fittings have C0, C90 & C180 classifications as per Fig 2.

Fig 1

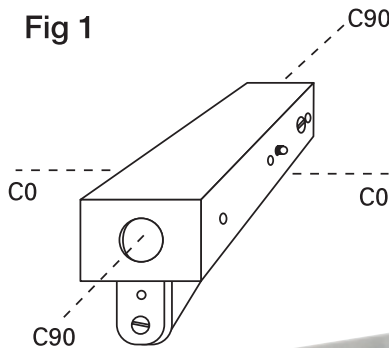
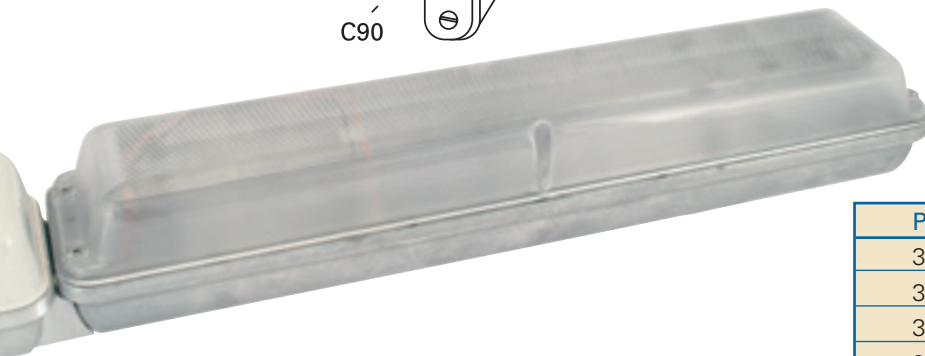
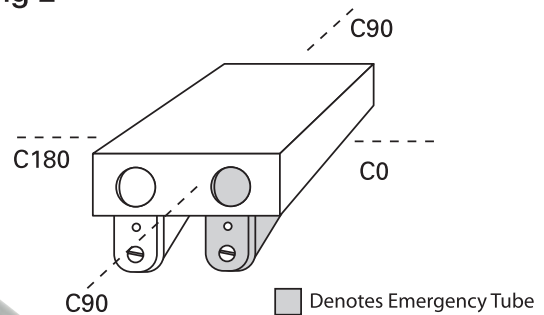


Fig 2



WPDBH Exit Diffuser Options

Product Code	Diffuser Type
31-WP1	EXIT
31-WP2	<EXIT
31-WP3	EXIT>
31-WP4	<EXIT>

Dimensions

Model	Weight Kg	Length L	Width W	Height H
WPDBH****	2.5	365mm	150mm	105mm
WPBH*118**	3.5	706mm	176mm	120mm
VP**118M	3.5	650mm	115mm	110mm
VP**218M	3.5	650mm	185mm	110mm
VP**136M	4.5	1275mm	115mm	110mm
VP**236M	5.0	1275mm	185mm	110mm



For more information on Stanilite Products

Phone 1300 666 595

Fax 1300 666 594

www.tnbaust.com

Thomas & Betts Australasia Pty Ltd
 Head Office 23a Nyrang St Lidcombe NSW 2141
 ABN 62 074 810 898

Thomas & Betts
Leading the Way